

About WEDC

The Water, Engineering and Development Centre is one of the world’s leading education and research institutes for developing knowledge and capacity in water and sanitation for sustainable development and emergency relief.

We are committed to the provision of effective, evidence-based and appropriate solutions for the improvement of basic infrastructure and essential services for people living in low- and middle-income countries. With over 45 years of experience, we offer expert advice and quality learning opportunities for sector professionals.

Founded in 1971, WEDC is based in the School of Civil and Building Engineering at Loughborough University, one of the top UK universities. Being a part of a leading university gives us a recognised platform of independence and quality.

What makes us stand out from the crowd is our outreach to practitioners. We use our knowledge base and our applied research work to develop the capacity of individuals and organizations throughout the world, promoting the integration of social, technical, economic, institutional and environmental activities as foundations for sustainable development.

Visit our website to find out more about our postgraduate and professional development programmes (MSc, Diplomas and postgraduate certificates available at the University or by distance learning); our research; our advisory services; our international conferences; and our extensive range of information resources which are free to download from our knowledge base.

<http://wedc.lboro.ac.uk>

Measuring chemical concentrations in water

To ensure that water is safe to drink, it is important to eliminate any harmful micro-organisms that may be present in the water. It is important too, to limit the concentrations of chemicals that could also be present in the water.

This guide is a transcript of the WEDC film of the same title from <http://wedc.lu/measuring-chemical-concentrations-in-water>. The film looks at how chemicals in water can be measured, using chlorine, nitrate and iron as examples.

Contents

Chemical concentrations in water 1
 Chlorine 1
 An overview of the process 1
 When and where should the testing of
 chlorination take place? 3
 Iron 6
 The process for testing concentrations of
 iron in water 7
 References 8



Although the examples shown in the film were undertaken in a laboratory, with portable test kits, these methods can be used in the field too.



**Water, Engineering and Development Centre
 School of Civil and Building Engineering
 Loughborough University
 Leicestershire LE11 3TU UK**

T: + 44 (0) 1509 222885 LinkedIn: [WEDC UK](#)
 E: wedc@lboro.ac.uk Twitter: [wedcuk](#)
 W: wedc.lboro.ac.uk YouTube: [wedclboro](#)



© WEDC, Loughborough University, 2017

Authors: Brian Reed, Mike Smith and Rod Shaw

Photographs by Ken Chatterton

Designed and produced by WEDC Publications

This guide is one of a series of published learning resources which are available for purchase in print or available to download free of charge from the WEDC Knowledge Base. Any part of this publication, including the illustrations (except items taken from other publications where WEDC does not hold copyright) may be copied, reproduced or adapted to meet local needs, without permission from the author/s or publisher, provided the parts reproduced are distributed free, or at cost and not for commercial ends and the source is fully acknowledged. Please send copies of any materials in which text or illustrations have been used to WEDC at the address given below.

Published by WEDC, Loughborough University

ISBN 978-1-911252-08-5

This is one of a series of WEDC guides on sanitation. For a comprehensive list of all published guides, please visit: <http://wedc.lu/wedc-guides>

Water, Engineering and Development Centre
School of Civil and Building Engineering
Loughborough University
Leicestershire LE11 3TU UK

T: + 44 (0) 1509 222885 LinkedIn: [WEDC UK](#)

E: wedc@lboro.ac.uk Twitter: [wedcuk](#)

W: wedc.lboro.ac.uk YouTube: [wedclboro](#)



Learn with WEDC

Learn with one of the top, award-winning universities of excellence in the UK and partake in a quality learning experience.

Gain a recognised, respected, independent and validated qualification.

WEDC offers you a wide variety of learning opportunities in all aspects of water and environmental management, water and waste engineering and infrastructure in emergencies.

You can learn in different ways and at different levels. Come to WEDC or study at home or at your place of work.

Choose from one of our postgraduate programmes and study towards a Postgraduate Certificate, Diploma or Master of Science (MSc). Study by research towards a PhD.

Alternatively, tailor-make a programme from our wide range of stand-alone modules to suit your particular professional development requirements.

Or you may prefer to invite us to collaborate with you to devise a programme especially for your staff.

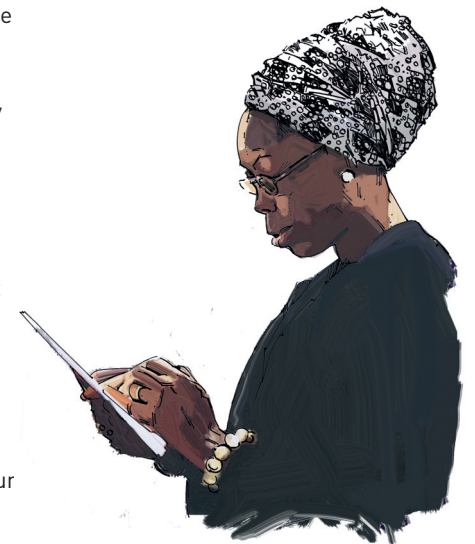
Go straight to details about one of our learning opportunities.

Postgraduate programmes

- [Infrastructure in Emergencies](#)
- [Water and Environmental Management](#)
- [Water and Waste Engineering](#)

Other courses and programmes

- [Special courses for groups](#)
- [Professional development](#)
- [PhDs](#)
- [Online courses](#)



the level of concentration of iron in the water (Figure 22). **Wait for 15 minutes** to allow time for the tablets to react fully with the iron.

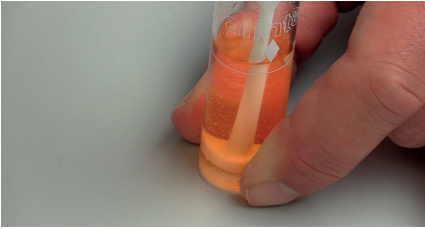


Figure 22. The two crushed tablets react in the water

Using a photometer, **insert the control test tube**, first giving it a wipe to make sure that the test tube is clean. Then **press 'OK'** and the photometer will prompt you to **insert the test sample** (Figure 23). Give that a wipe too and **place it in the photometer**. **Press 'OK' again** and the photometer shows a reading of 1.06 milligrams per litre of iron in the water sample.



Figure 23. The sample test



Figure 24. The final reading

References

Measuring chemical concentrations in water, 2017. [Video] REED, B.J, SMITH, M.D. and SHAW, R.J. Loughborough University: WEDC / Hallahan and Chatterton. [Online] Viewed: 21/02/17] Available from: <http://wedc.lu/measuring-chemical-concentrations-in-water>

WHO, 2017. *Drinking-water quality guidelines* [Online] [Viewed: 07/02/17]. Available from: http://www.who.int/water_sanitation_health/water-quality/guidelines/en/

Chemical concentrations in water

While not all chemicals present in water are necessarily harmful to human health, a chemical can become so if concentrations of the chemical are too high. On the other hand, if chemicals such as chlorine are used to disinfect water, it is important to ensure that *sufficient* concentrations are present.

So measuring chemical concentrations in water is an important activity in discerning whether water is suitable for human consumption.

Chemicals that are of particular concern are chlorine, iron, nitrate, fluoride and arsenic; each having an increased level of complexity.

In some instances, the presence of heavy metals may be a problem.

Water samples suspected of containing heavy metals require specialist examination in a laboratory, which is not covered here or in the film.

Chlorine

As chlorine concentrations in water reduce over time, it is important to check concentrations of chlorine in drinking water periodically. The quickest and simplest method for testing chlorine concentrations is an indicator test, using a comparator (Figure 1). For this method, a tablet of chemical reagent is added to a sample of water,



Figure 1. A comparator



Figure 2. A sample of water, coloured red

colouring it red (Figure 2). The strength of colour is measured against standard colours on the comparator's chart to determine the chlorine concentration. The stronger the colour, the higher the concentration of chlorine in the water.

Several kits for analysing the chlorine residual in water, such as the one pictured in Figure 1 are available commercially.

An overview of the process

Inside the comparator are three chambers: a central one, and two smaller ones, one on each side (Figure 3). The chamber on the left is a test chamber

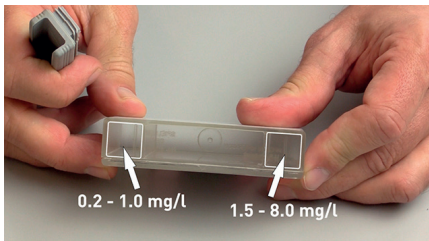


Figure 3. The three chambers of the comparator

for measuring 0.2 to 1.0 milligrams of chlorine per litre. The chamber on the right is for measuring 1.5 to 8.0 milligrams per litre. The central chamber is used for a control test.

It is important to make sure that it is the quality of the water sample that is tested and not any residual water left in the comparator, so first **rinse out the comparator** three times with clean water from the sample to be tested (Figure 4).



Figure 4. Rinsing out the comparator

Next, take one of the tablets and then very carefully — without touching anything else — **place the tablet into the left hand chamber** (Figure 5).

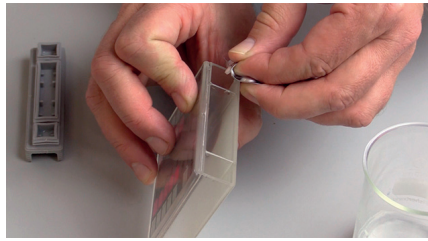


Figure 5. Placing the tablet into the left hand chamber

Pour a little water into the left hand chamber and **crush the tablet** with a sterilized plastic spatula. Put the comparator on a firm surface so that you don't push the bottom out (Figure 6).



Figure 6. Crushing the tablet

Top up the chamber to the 10 millilitre mark with more of the water sample (Figure 7).

Put the lid on and give it a good shake.

The sample has turned slightly pink on the scale so we can tell that there is a very low concentration of chlorine in the water.

that that it is limited to an acceptable concentration. Figure 18 shows a water sample containing a high concentration of iron. You can just see the suspended particles at the bottom of the sample as they settle.

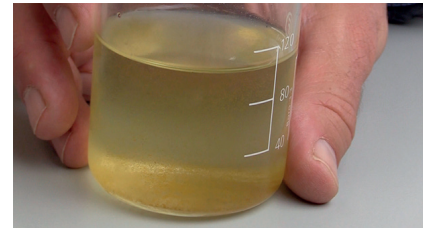


Figure 18. A sample of water containing iron

The bottle of water shown in Figure 19 has a much lower concentration of iron in it. No iron particles are visible, but it is suspected that the water may contain some dissolved iron.

The process for testing concentrations of iron in water

Fill two test tubes to the 10 millilitre mark from the water sample using a pipette (Figure 20). There are now two test tubes from that sample. One is the control, so that is put to one side for now. **Add two tablets to the other test tube** – Iron number 1 tablet, and Iron number 2 tablet.

First of all **drop tablet number 1** into the test tube and **crush it**. Then **drop tablet number 2** into the test tube and **crush it** too (Figure 21).



Figure 19. A sample of water suspected of containing a small amount of dissolved iron



Figure 20. Two test tubes



Figure 21. The tablets are added and crushed

The two crushed tablets react in the water and it is immediately possible to see that the colour changes. The extent of the change to the colour depends on



Figure 15. Inserting the test tube into the photometer

Then **press the 'OK' button again**. The display now asks you to insert the test sample, so **take the blank out, wipe the outside of the sample test tube** to ensure it is clean, **place it into the photometer** with the diamond mark pointing towards you, and **press 'OK'**.

The photometer gives a reading of 0.193 milligrams per litre of nitrogen – this test measures the concentration of nitrogen (Figure 16). As there may be other nitrogen compounds present, to calculate the nitrate concentration the measured nitrogen concentration has to be multiplied by 4.4.

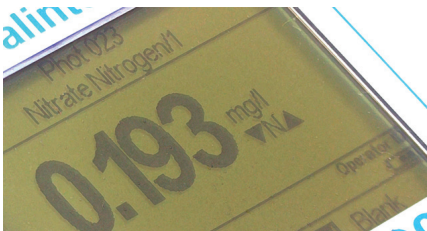


Figure 16. A reading of 0.193 milligrams

So in this case, that's about 0.2 of a milligram per litre of nitrogen, and 0.88 milligrams per litre of nitrate. The concentration of nitrate is greater than the concentration of nitrogen because nitrate molecules contain other elements in addition to nitrogen.

Iron

The human body requires iron to function, so a small concentration of iron in water is not harmful to health. Too much iron can also cause the water to taste unpleasant. The World Health Organization notes that there is usually no noticeable taste at iron concentrations below 0.3 milligrams per litre, although turbidity and its reddish-brown colour may be apparent and be off-putting to some consumers. High concentrations of iron can also stain washing and food, and may deposit a slimy coating on piping, potentially blocking or corroding the pipework of water systems (Figure 17).



Figure 17. High concentrations of iron staining washing

For these reasons it is important to check for iron in water supplies and ensure

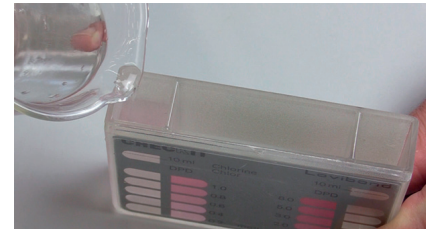


Figure 7. Topping up the chamber

As it is outside the colour range on the scale we know that this sample has less than 0.2 milligrams per litre (Figure 8).

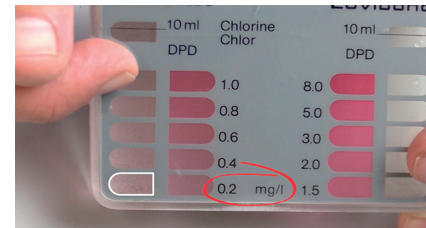


Figure 8. Water with a low concentration of chlorine

If the sample matches a colour on the comparator then a reading can be taken.

If the colour is stronger than represented on the comparator then we won't know how much chlorine the deeper colour represents.

In such a case a piece of equipment called a photometer can be used to determine more precisely the concentration of chlorine in the water.

The chemical used for this test produces a colour change if chlorine is present, and the amount by which the water changes colour depends on the chlorine concentration.



Figure 9. Water with a high concentration of chlorine



Figure 10. A photometer

By comparing the colour against a reference colour, the chlorine concentration can be determined.

When and where should the testing of chlorination take place?

Continuous chlorination is most commonly used in piped water supplies. Regular chlorination of other water

supplies is difficult and usually reserved for disinfection after repair and maintenance.

It is common to test for chlorine residual just after the chlorine has been added to the water to check that the chlorination process is working; also:

- at the outlet of the consumer nearest to the chlorination point to check that residual chlorine concentrations are within acceptable limits;
- and at the furthest points in the network where residual chlorine should be detected, but where concentrations are likely to be at their lowest.

The higher the residual chlorine concentrations in the supply, the longer the chemical will be able to protect the system from contamination.

However, high concentrations of chlorine make the water smell and give it a bad taste, which will discourage people from drinking it. For normal domestic use, residual chlorine concentrations at the point where the consumer collects water should be between 0.2 and 0.5 milligrams per litre.

Nitrate

Nitrate is found naturally in the environment and is an important plant nutrient. It can infiltrate both surface water and groundwater as a consequence of human or agricultural activity.

The problem with water that contains excess amounts of nitrate is that it encourages the growth of algae and the characteristic algal bloom in rivers, lakes and surface reservoirs can lead to many problems of water quality. This is an extreme case, however. What we are going to look at is measuring much lower concentrations of nitrate, which can show whether the water contains nitrate from fertiliser or urine. Figure 11 shows a screw top bottle for testing samples of water containing nitrate.



Figure 11. A screw top bottle for testing samples containing nitrate

The bottle is marked at 5, 10, and 20 millilitre intervals. **Unscrew the top and pour in a sample of water** containing nitrate up to the 20 millilitre mark .

Then **add a level spoonful of nitrate test powder**, which comes with the test kit (Figure 12).

Together with that, add one nitrate test tablet. It is important to avoid handling this because handling can contaminate the tablet, so **put one tablet in the lid and then tip that into the bottle** (Figure 13).



Figure 12. Adding the nitrate powder



Figure 13. Adding the nitrate test tablet

Don't crush it, just **screw the top on**, making sure it's tight, then **invert it and shake it vigorously** for one minute. Then **leave it to stand** for another minute to allow time for the chemicals to react.

Now **invert the screw top bottle** four times and leave it to settle. This could take a couple of minutes or longer. Particles will be very small so will settle slowly.

Once the particles have settled, **take the top off and wipe around the top with a clean tissue** to remove any contamination, and **transfer the contents** into a test tube, filling it to the 10 millilitre mark.

Now **add one nitricol tablet**, which comes in a pre-sealed unit. Ease it into the test tube without touching it. **Crush it.** The chemical reaction it produces causes the colour to change (Figure 14).



Figure 14. Adding the nitricol tablet will cause the colour to change

Although we could assess the colour visually, as we did for the chlorine test, different people may perceive colours differently. Using a photometer makes the test more objective (Figure 10).

So **place the test tube in the photometer** setting the display to 'Nitrate', and **press the 'OK' button**. The photometer display prompts you to insert a blank sample so that the test sample can be compared against another sample that has not been prepared in this way. The original water sample being tested is used as the blank. **Fill a test tube** to the 10 millilitre mark with the water sample, then **put the top on and wipe it** around the outside of the glass to ensure it is clean.

While keeping the diamond mark on the glass towards you, **insert the test tube**, and **replace the cover** (Figure 15).